

vevoTM
Let the **light** in

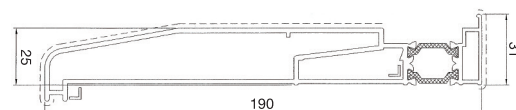
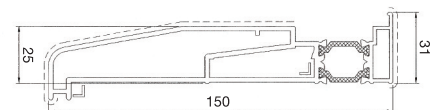
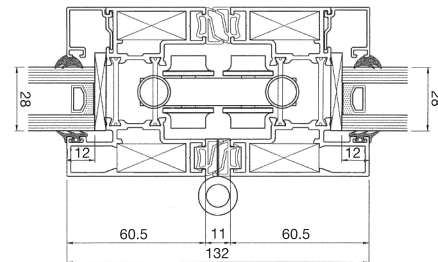
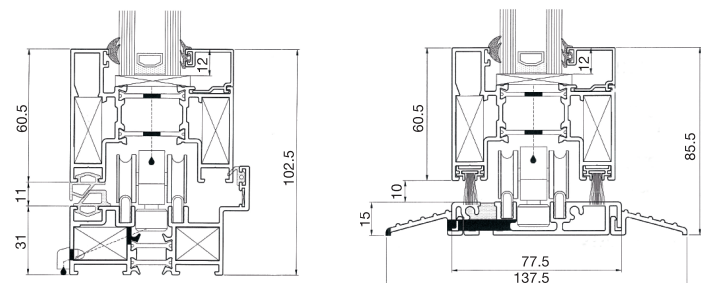
Vevo1000



Slide folding doors offering slim sightlines that are ideally suited to residential applications.

System Features:

- Attractive, slim-line profiles offer reduced sightlines.
- Square edge profile.
- Fabricated using mitred corners.
- Locking mechanism available with 'lift-up' to lock handle.
- High security multi-point lock.
- Highly engineered, robust hinges.
- Specially designed stainless steel rollers give smooth and easy operation.
- Fully weather sealed.
- Dual colour option available.
- Aluminium low thresholds available, but not suitable for most domestic applications.



Specifications

Finish	Single or dual colour, high quality polyester powder coat as standard
U value	1.8 W/m ² K
Air	Class 4, 600pa
Wind	Class 4, 1800pa
Water	Class E750, 750pa
Doc L 2010	Yes
Frame Depth	70mm
Typical sight line*	132mm
Glass	28mm double glazed units
Max o/a height (per sash)	2500mm
Max o/a width (per sash)	1000mm
Max sash weight	100kg